

FREQUENTLY ASKED QUESTIONS HH-5500 CENTRIFUGE Electric Main Drive/Hydraulic Back Drive

DIMENSIONS/WEIGHTS

Skid mounted 5500 10' 9" x 6' 8" x 5' 10"
Weight: 10,200lbs.



Feed Pump 9' 9" x 2' 3" x 3' 4"
1,200lbs.



*Stand (closed for trucking) 18' long x 8' 10" wide, 9' tall
(telescopes to 12')

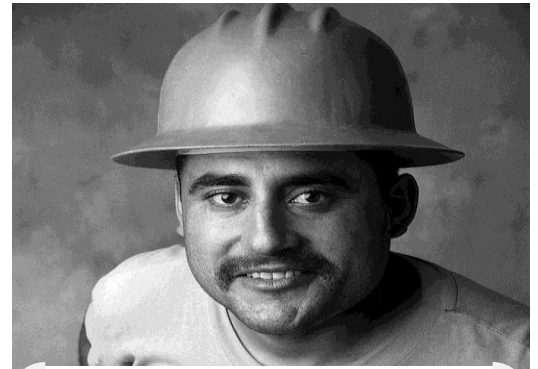
Stand dimensions open with guard rails at site: 18' long, 13' 10" wide
Opening height understand: 8'



4,600lbs.

*Permit load due to width of stand just a little over size. **Rig up of equipment requires a 20 ton crane.**

Total Weight: Approximately 16,000 lbs.



*Frequently asked questions
Weights/Dimensions
Electrical Requirements
Rotation
Pumps
Port sizes
Emissions
Start up/Shut Down Procedures
Lubricant/Oil specs.*

ELECTRICAL REQUIREMENTS

480 3 PHASE Explosion proof/NEMA 7 Rated
Pump ties into centrifuge panel
Centrifuge (2) 60 hp motors 72 full load amps each
10 hp Feed pump 10 amps
Recommended Start up amperage: 200 amps
Run amperage: 165 amps



Connector cable 50' included with rental for centrifuge to power source, 25' for pump to centrifuge panel
2/0 4 conductor type p (2" opening)

PROPER ROTATION

After wiring is complete use the following method to ensure proper rotation.

- 1) Start the back drive momentarily. Then looking down at the fan motor, it should be turning clockwise.
- 2) Start the main drive momentarily, the rotation should match the arrows that are on the case lid.

WATER REQUIREMENTS

Requires potable water for cooling of hydraulic pump during operation
At a recommended rate of 3-3.5 gallons per minute

EFFLUENT/SOLIDS PORT CONNECTIONS:

Both 6" Vic openings. Hutchison Hayes does not supply transitions.
Requires 6" x 4" Vic reducing coupling if using 4" hose.
Suggest: Style 750 x" x 4" Victaulic reducing coupling (1) 4" Male NPT x Grooved End #A714

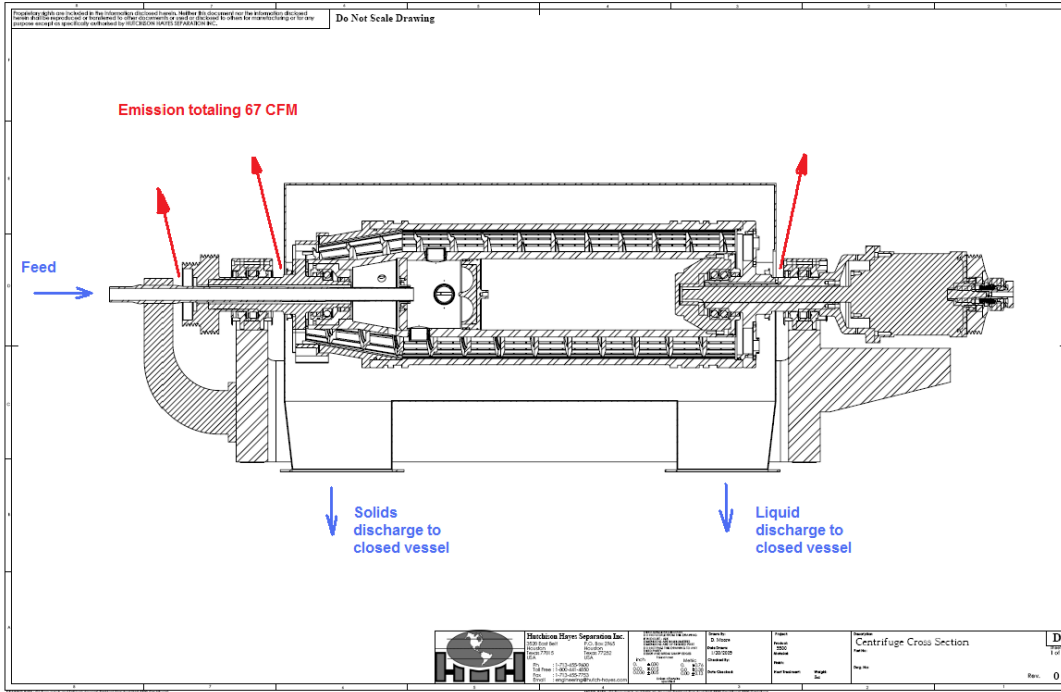
PUMPS

If you are renting pumps with this system you will receive one of two types of pumps. Prior to 2010 Max 2000 PdP 80 Progressive Cavity pumps were used exclusively in the rental fleet. As of 2010 we will be introducing CFS Lobe pumps into the rental fleet. Information for either pump can be sent upon request.

- 1) You should verify the proper rotation for the type of pump you are using. To accomplish this, you will have to start the centrifuge main drive, and bring it up to speed in order to check the rotation of the pump. **Note: If you are not using one of our rental pumps to feed the centrifuge, The feed pump overload relay in the control panel is sized for a 10 hp motor. Before using any other size motor, you should contact Hutchison Hayes for more information.**

PRE-SCREENING

Pre-screening to remove trash and debris is a requirement of the rental of this equipment. Excessive damage to pumps and centrifuge due to not pre-screening will be charged back to the customer.



EMISSIONS

These are approximations because there are so many variables. We do get this question a lot and expect it a lot more in the future. If you are required to operate a vapor recovery system you may want to talk with us to size your system but these numbers will at least give you a starting point.

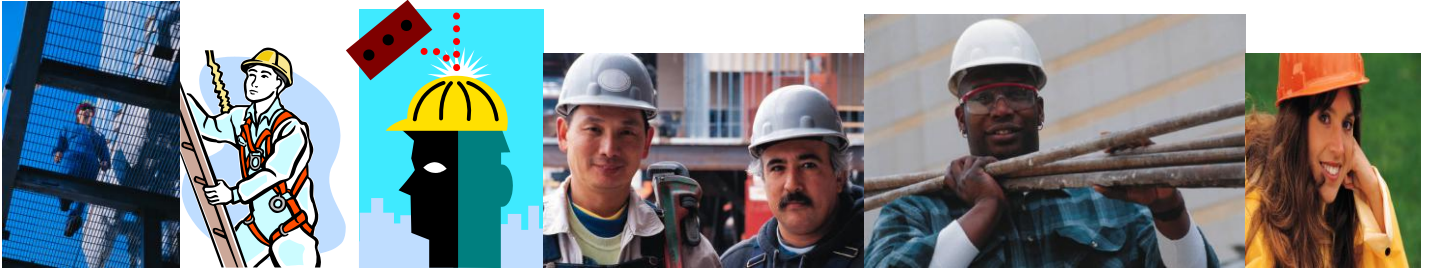
Closed system

67 CFM based on a closed system whereby the liquid discharge and solids discharge each to into a closed tank with a nitrogen gas blanket. The 67 CFM loss is based on a 5 psi pressure loss over the open area around the bowl heads and the feed tube.

Open tank system

350 CFM





Start up/shut down procedure

**Start the main drive bring it up to speed
Start the back drive bring it to differential setting desired
Start up auger if one is being used
Start up pump last.**

Shut down

**Shut down feed pump
Let unit run with no feed for about 30 minutes
Bring main drive to a stop
Shut unit down which will shut down auger if one is being used.
For emergencies there is an E-stop button on the centrifuge to shut it down.**

This information is being provided as a guideline only. We are always happy to answer questions with you prior to your rental or during your rental. For our seasoned project managers this may be redundant but field service trainees may find this a useful onsite reference tool.



All American Resources, Inc.

**U.S. Agent for Hutchison Hayes Separation, Inc.
Industrial Applications**

**38466 B. Baker Lane, Gonzales, La. 70737
Ofc: 225-928-9406 Cell: 713-410-6178 Fax: 225-208-1261
Website: aacentrifugerentals.com**